



HM White景觀建築師事務所與Fox & Fowle建築公司合作環繞霍伯輕軌車站設計了一個濱水廣場。設計將此地區的工業和海運傳統特色與新的設計理念雜糅在一起，分外和諧，為人們提供了一個新的休閒娛樂場所。

考慮濱水工業的框架和交通樞紐這些因素，景觀設計師將濱水邊緣及其景觀與霍伯輕軌的站臺和遮篷融為一體。綿延的走道和自行車道穿梭於兩個臨近的濱水廣場。在尊重哈德遜河的規劃標準前提下，設計發揚了河濱走道連綿不絕的延續性并統一了周邊的城市外部空間。海邊樹種、灌木叢和地被植物交錯種植於濱水旁，用來展現此地區原來的濱水植物風貌。整體植物設計引用編織狀的系統呈現在傾斜的地形上，從而給人強烈的空間感。



Waterfront Plaza

Surrounding Hoboken Light Rail Terminal



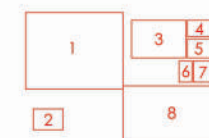
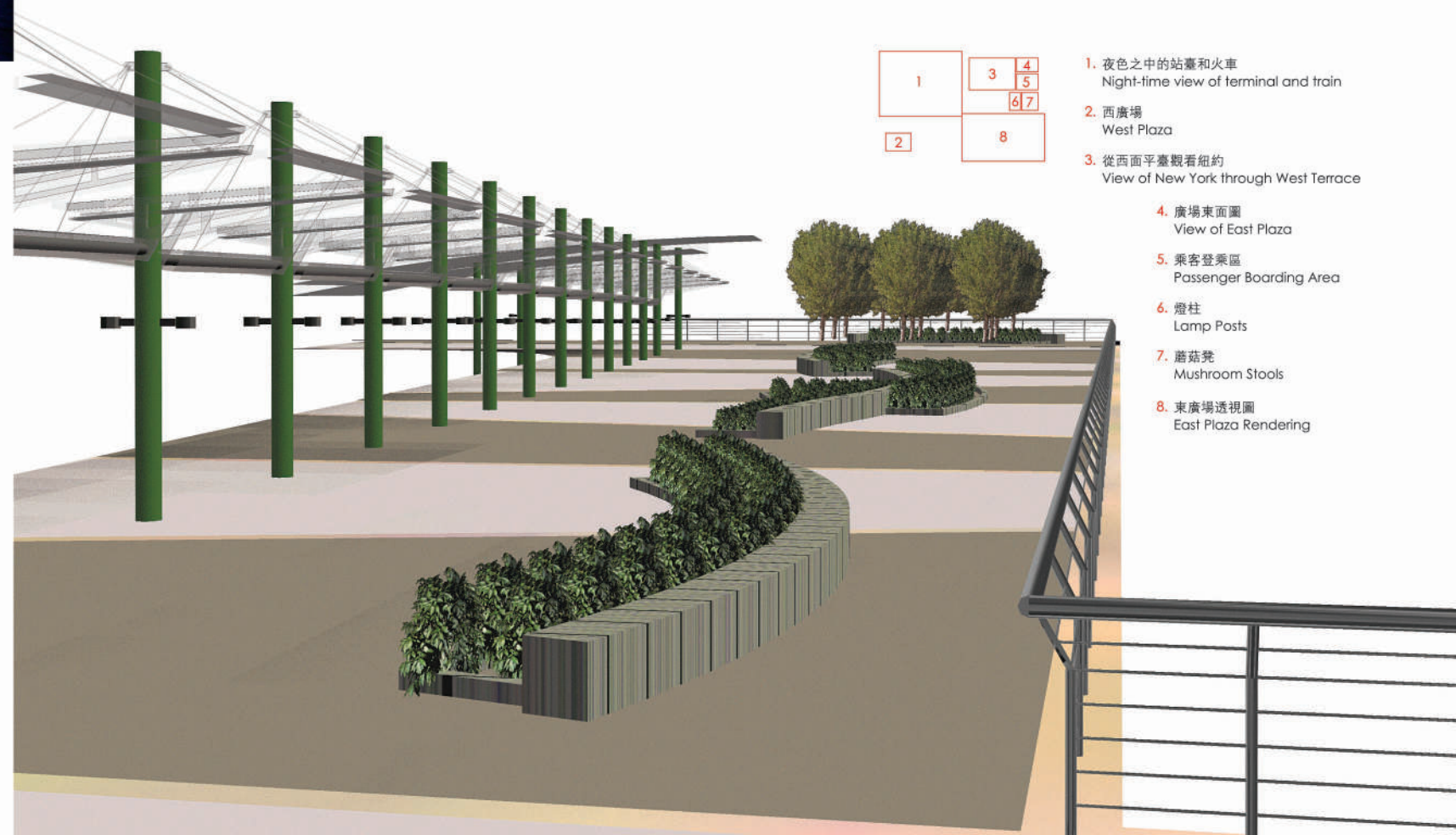
霍伯輕軌站的濱水廣場

HM White Site Architects, New York

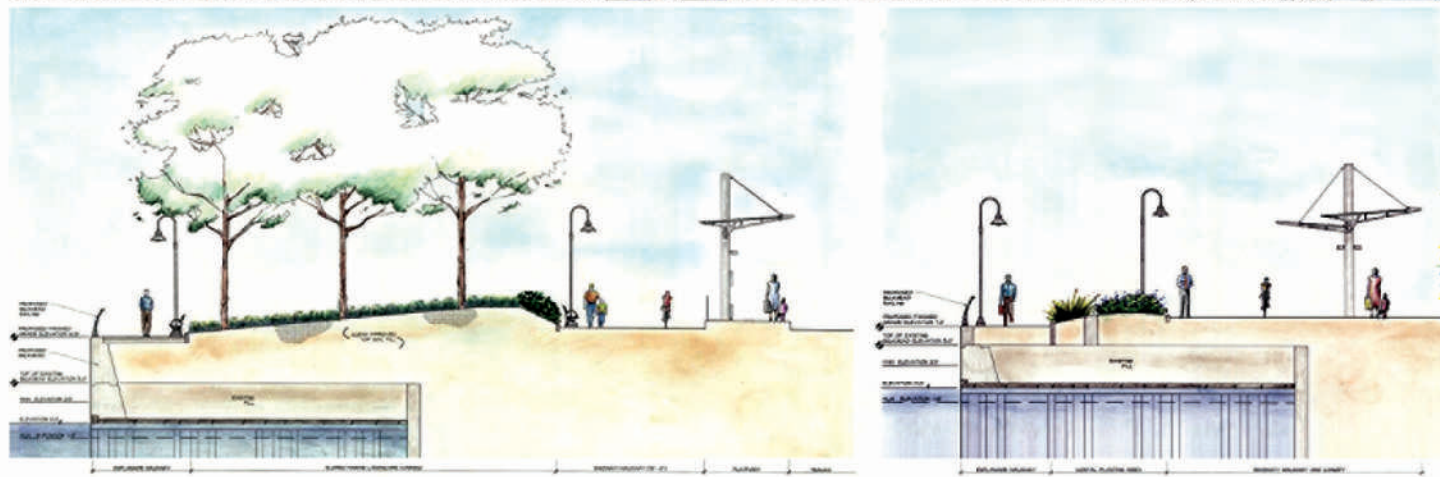
Philosophy · 設計理念

HM White景觀建築師事務所相信精心設計的景觀最能向人們展現着其中的文化內涵。歷史底蘊、變化的條件和感觀所見都能給設計師以靈感，建造易解而有意義的項目。通過創新和系統的分析，每一個場地固有的特色都自然的呈現在人們面前。

HM White Site Architects believes that the designed landscape is among the most powerful forms of cultural expression. A site's history, dynamic conditions, and sensual qualities inspire us to create legible and meaningful forms in every project. Through innovative and systemic analysis, the inherent order of each setting is naturally revealed.



1. 夜色之中的站臺和火車
Night-time view of terminal and train
2. 西廣場
West Plaza
3. 從西面平臺觀看紐約
View of New York through West Terrace
4. 廣場東面圖
View of East Plaza
5. 乘客登乘區
Passenger Boarding Area
6. 燈柱
Lamp Posts
7. 蘑菇凳
Mushroom Stools
8. 東廣場透視圖
East Plaza Rendering



- 9. 西廣場透視圖
West Plaza Rendering
- 10. 西廣場截面圖
West Plaza Section
- 11. 東廣場截面圖
East Plaza Section

As landscape architectural consultants to 21st Century and New Jersey Transit, in collaboration with Fox & Fowle Architects, HM White has developed the landscape and site architectural design for the waterfront plaza areas surrounding the Hoboken Light Rail Transit station. The design incorporates the most significant aspects of the site's industrial and marine heritage while inserting a new design vocabulary appropriate to the site's new public space use.

Within the framework of this industrial waterfront and transportation node, the creation of a legible landscape setting was to unite the waterfront edge and its riverfront landscape with HVRT's platforms and canopy structures. A continuous walkway and bikeway provide access through two adjacent waterfront plazas. Following the Hudson River Waterfront Walkway Design Standards, the site design reinforces the larger regional context of making the Hudson River waterfront walkway a continuous and unified civic amenity. Coastal trees, shrubs and grasses have been introduced to represent the site's former riparian vegetation. Plantings have been inserted as a woven system and on a tilted plane to create a spatial framework. ■■