

International New Landscape 國際新景觀

Stone in Landscape

石尚——石材在景觀設計中的應用

October 2007 No.5 | Volume 2

# International new landscape

## 國際新景觀

10 / 2007 No.5 Price: AUD 16 / USD 12 / RMB 58



ISSN 1833-0673



9 771833 067003 >

Topic: **Stone 石尚**  
石材在景觀設計中的應用 in Landscape

Publisher**出版人** Charles Shen  
Proprietor**社長** Hanson Willey  
Distributor**發行人** William Lowndes  
Committee**編委** Adrian Mc Gregor  
Charles Morris Anderson Catherine Rush  
Henry M. White III James Hayter Kate Cullity  
Kevin Taylor Lorenz Dexler Martha Cecilia Fajardo  
Michael Wright Michael Van Valkenburgh  
Mike Home Martin Rein-Cano Pery Lethlean  
Philip Coxall Samuel A. Lawrence Skye Haldane  
Susanne Burger Winfried Häfner  
Editor-in-Chief**執行主編** 石瑩 Erica  
Marketing Manager**市場總監** 林佳藝 Rita

Art Editor**美術編輯** Vivian Kelly  
Editor-in-Charge**編輯部主任** 姜穎 Jenny  
English Editors**英文編輯** 熊磊麗 Joanna 高豐 Myra  
Judy Jessie  
Marketing Assistant**市場助理** 袁雙 Nancy  
Art Editor-in-Charge**執行美編** 正奇溝通(上海)設計顧問 楊翠微  
Contributing Editors**特約編輯** Alban Mannisi Ashley Owens  
Christian Bohne Christian Borchert Danae Taylor Dorothy Tang  
Gabrielle Ingram Emily Lin Guangping Wang Judith Wild  
Karen Janosky Larissa Ward Rupert Carmichael Mengqing Kwah  
ISSN**刊號** 1833-0673  
Publishing Date**出版日期** 雙月 Every even month  
Price Per Issue**每期定價** AUD 16 USD 12 RMB 58

Cooperative Company **協辦單位**  
上海市園林設計院

**Australian Office**  
Add: 32 Pretoria Road, Seven Hills, NSW 2147, Australia  
Post Code: 2147  
Tel: 61-2-9631-8820  
Fax: 61-2-9621-1888  
E-mail: info@inl.net.cn  
URL: www.inl.net.cn

Membership Companies & Associations**成員單位**  
易蘭(亞洲)規劃設計事務所  
EADG泛亞國際  
上海現代建築裝飾環境設計研究院有限公司  
American Society of Landscape Architects ASLA  
private plots & public spots

Media Link**媒體支持**



Cover Photo**封面圖片提供**  
Michael Van Valkenburgh Associates, Inc., USA

**Chinese Office**  
Add: 上海市長寧區新華路365弄6號 科技園9號樓3A-3B  
3A-3B Room, No.9 Science and Technology Zone, No.6, 365 Lane,  
Xinhua Road, Changning District, Shanghai, China  
Post Code: 200052  
Tel/Fax: 86-21-62809447 / 62809448  
E-mail: info@inl.net.cn URL: www.inl.net.cn

Membership Companies & Associations**成員單位**  
EDSA Orient  
EDAW 易道公司  
美國YPA·北半球景觀設計公司  
Shanghai Society of Landscape Architects 上海市景觀學會  
International Federation of Landscape Architects IFLA

Supportive Companies & Associations**理事單位**

da 大觀設計  
A&I(安道國際)  
意格規劃與設計  
禾力美景規劃及景觀設計有限公司  
深圳市東大景觀設計有限公司  
廣州市太和景觀設計有限公司  
瑞典SED新西林園林景觀有限公司  
加拿大賽瑞(CSC)景觀工程設計公司  
FLEMING ORGANIZATION(佛萊明上海)  
易亞源境(上海)景觀設計諮詢有限公司  
華標造景坊(天津)

# Contents 目錄

092 詩加達環境設計  
Cicada Landscape Architect

景觀設計師  
Landscape Architects

086 噴水設計細部與技術  
The Detail and Technology of Fountain Design

景觀細部  
Detail

082 摩根圖書館  
Morgan Library & Museum

景觀實踐  
Practice

074 萊比錫綠色戶外空間  
Green Bow in Leipzig—Heiterblick

062 垂直的花園——沙拉吧  
Salad Bar—Prototype Vertical Garden

景觀生態  
Ecology

058 李隆海關廣場  
Customs Plaza

景觀藝術  
Art

056 伯爾尼印象  
Bern Impression

城市掠影  
Flash

050 石頭與草地的連接，硬質與軟質的互動——大眾汽車生活園  
Stone & Grass Hardscape & Softscape  
——Volkswagen Mobile Life Campus

046 藝術與幾何的交匯，幾何與景觀的結合——臺灣長庚醫院  
Chang Gung Hospital

038 霍爾茨基爾辛納火車站前庭  
Forecourt—Holzkirchner Railway Station

028 軟硬質景觀的庭院奇緣——伊麗莎海岸住宅  
Mt. Eliza House

016 石尚——紐約泪珠公園  
Stone + Plant + Material + Topography—Teardrop Park

專題  
Topic

006 美洲，亞洲，歐洲，澳洲最新行業動態  
America, Asia, Europe, Australia

景觀新干綫  
News

002 “石尚”——石材在景觀設計中的運用  
Stone in Landscape

卷首語  
Editor's Note



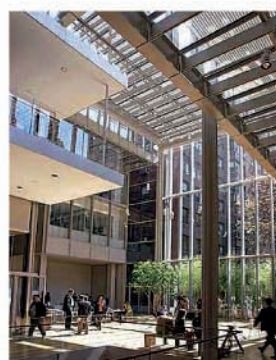
# THE PIERPONT MORGAN LIBRARY

## 摩根圖書館—博物館 & MUSEUM

Award: AIA New York Chapter, 2006 Honor Award

美國建築師協會—2006紐約榮譽獎

Location: New York



摩根圖書館和博物館坐落在紐約市的中心，原為金融家皮爾朋·摩根的私人圖書館。經歷了一段歲月之後，它成為公眾場所，可以為學者、大眾所欣賞、研究。

摩根圖書館校園最大的一次擴建完成於2006年。周圍的景觀天衣無縫地將倫佐·皮阿諾建築工作室設計的現代中庭和圖書館原有的古老建築完美融合。新建築通過透明的視覺連系突破性地將戶外花園帶入室內的空間。HM White景觀建築師事務所的設計給人強烈的視覺衝擊，整合了建築與場所的交叉點。

作為綠色的肌理，黃楊灌木叢包裹了大部分基地的邊緣，使得圖書館與人行道的交接清晰可辨。白樺樹點綴在麥迪遜大街的入口和沿第36街而建的花園。戶外的東廊原本只是后勤服務通道，竟被設計師巧妙地配以燈光竹林作遠景。透過中景玻璃幕牆，室內的垂葉榕更成了點睛之筆的近景。HM White景觀建築師事務所並且負責建立地下結構標準，它能够承托整個地表花園的重量。

統一的街邊綠樹裝飾著街景，與圖書館周圍景色渾然一體，並將其校園氣息延伸至公共領域。

01	02	05	08
		06	
	03	07	
04		09	

01. 麥迪遜大道的圖書館主入口  
Library campus main entrance
02. 長綠喬木柔化舊建築之間的衝突  
Trees transfer new building & old building.
03. 時空交錯的層次令人忘記自己是在密封的室內還是空氣清新的戶外  
Hierarchy makes you forget inside or outside.
04. 陽光、建築結構和景觀綠化編織出動感空間  
Sunlight, structure and landscape weave a dynamic space.
05. 站在入口大堂，感受到末端的吸引  
Standing at the entrance, feeling invitation inside.
06. 大堂整體  
Lobby overview
07. 雞尾酒會的好場所  
Cocktail
08. 麥迪遜大道的圖書館主入口  
Library campus main entrance
09. 圖書館庭院平面圖  
Library campus plan





A complex of buildings in the heart of New York City, the Morgan Library & Museum began as the private library of financier Pierpont Morgan. Over the years - the library and its treasures are available to scholars and the public alike by transforming it into a public institution.

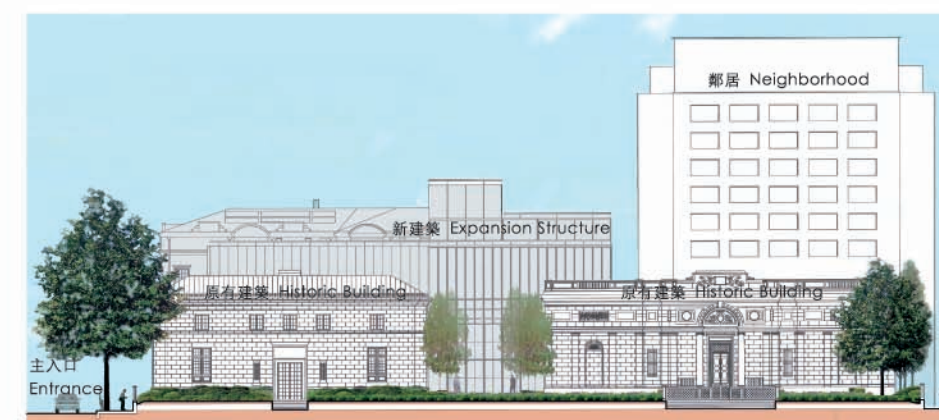
The largest Morgan Library urban campus expansion in the history was completed in 2006. The landscape design has been seamlessly woven into its recent expansion and emerges as the exterior fabric that binds Renzo Piano Building Workshop's new pavilions with the Library's original historic buildings. Portions of the new buildings, create transparent visible connections to the surrounding gardens linking the exterior with the interior public spaces for the first time. HM White's design establishes a visually strong landscape vocabulary that reinforces this blurring of building and site intersections.

Pillowed Boxwood shrub masses envelop the buildings and serve as a dramatic connective green tissue that gives the site its distinctive structure. Birch groves punctuate the Library's Madison Avenue entrance and its new south garden along 36th Street. The interior Piazza is punctuated with specimen Ficus trees juxtapositioned against an exterior Bamboo grove backdrop within a newly created side garden - formerly a service yard. HM White was responsible for establishing the criteria for the subterranean structure to ensure sustainable horticultural support for these new ground level gardens.

The streetscape will be reinforced with a unified street trees system giving form to the Library's vibrant urban neighborhood context and extending its sense of campus further into the public realm.

10. 建築的縫隙剛好是景觀的取景框  
Building gap can be a view frame of landscape.
11. 白樺樹叢對人們看建築的視線起到過濾作用  
Passerby's view of building filtered by the Birch grove.
12. 景觀連接擴建建築和古老建築  
Landscape connects expansion structure & historic building.
13. 人性化的尺度  
Human scale
14. 從二層俯瞰中庭  
Interior overview from 2nd floor
15. 在古典與現代建材的背景，垂葉榕暗示着這裏將通向古老圖書館的展覽室  
On the classical & modern material background, Ficus tree is a cue to gallery spaces in the old building.
16. 在原本只是服務通道的東廊，竹子作為邊界緩衝，弱化周邊環境的視線干擾  
Bamboo buffer at East Alley, filters adjacent visual disturbance.

17. 在原本只是服務通道的東廊，竹子作為邊界緩衝，弱化周邊環境的視線干擾  
Bamboo buffer at East Alley, filters adjacent visual disturbance.
18. 簡潔而古典的臨街悅園  
Simple Sweet Garden on the south edge of the site.
19. 連殘疾人坡道的細部，也不忘記用可愛的常青藤來點綴  
Lovely Ivy on ADA ramp detail
20. 內置樹池——在建築設計最初階段就考慮景觀元素是至關重要的  
Recessed tree pit - Coordination of Landscape architect and architect is important.
21. 南立面圖  
South elevation



10	11	12	13	14
15	16	17	18	19
			20	
			21	

**Credits:**  
Landscape Architect: HM White Site Architects, New York  
Acknowledge Guangping Wang's great support