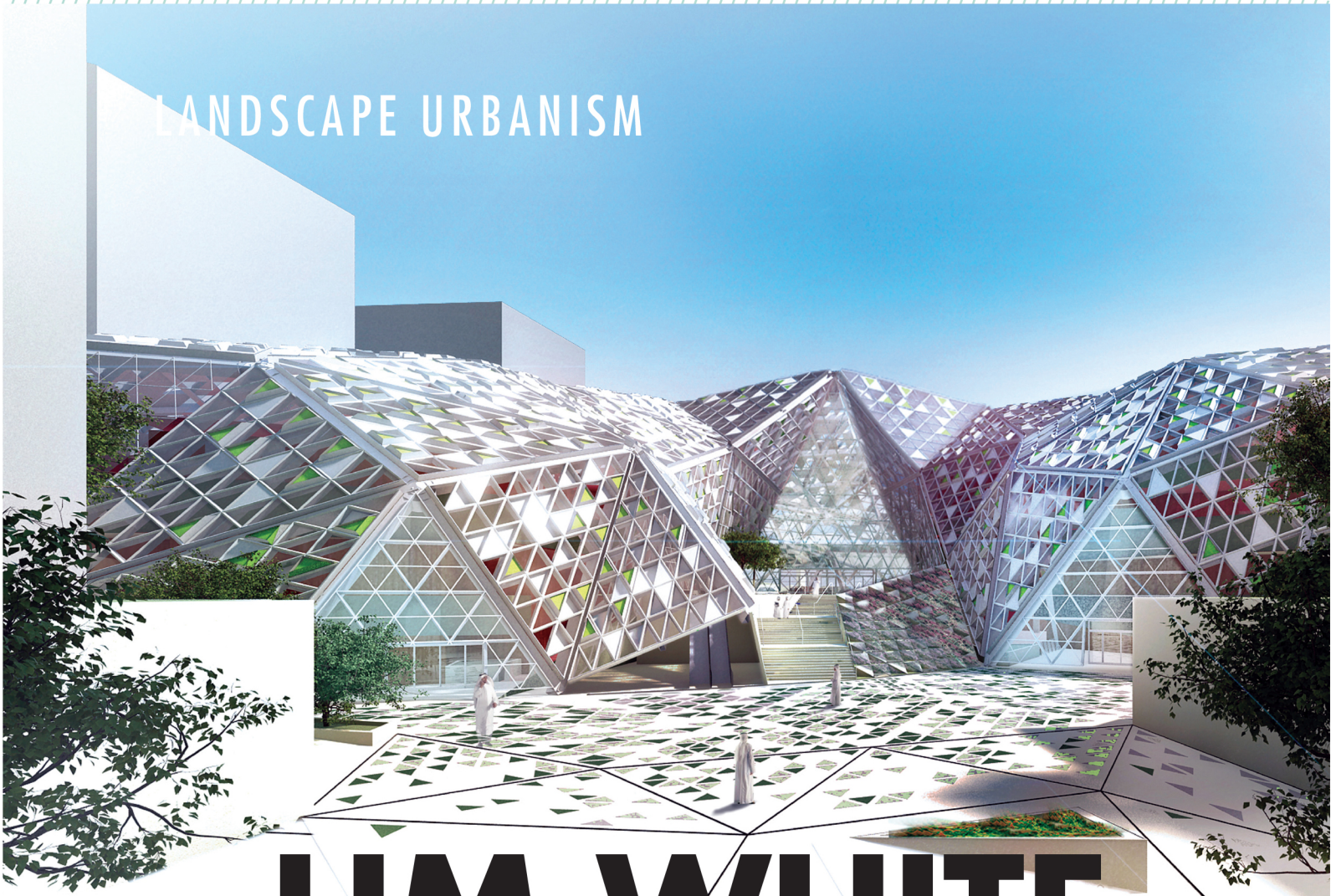
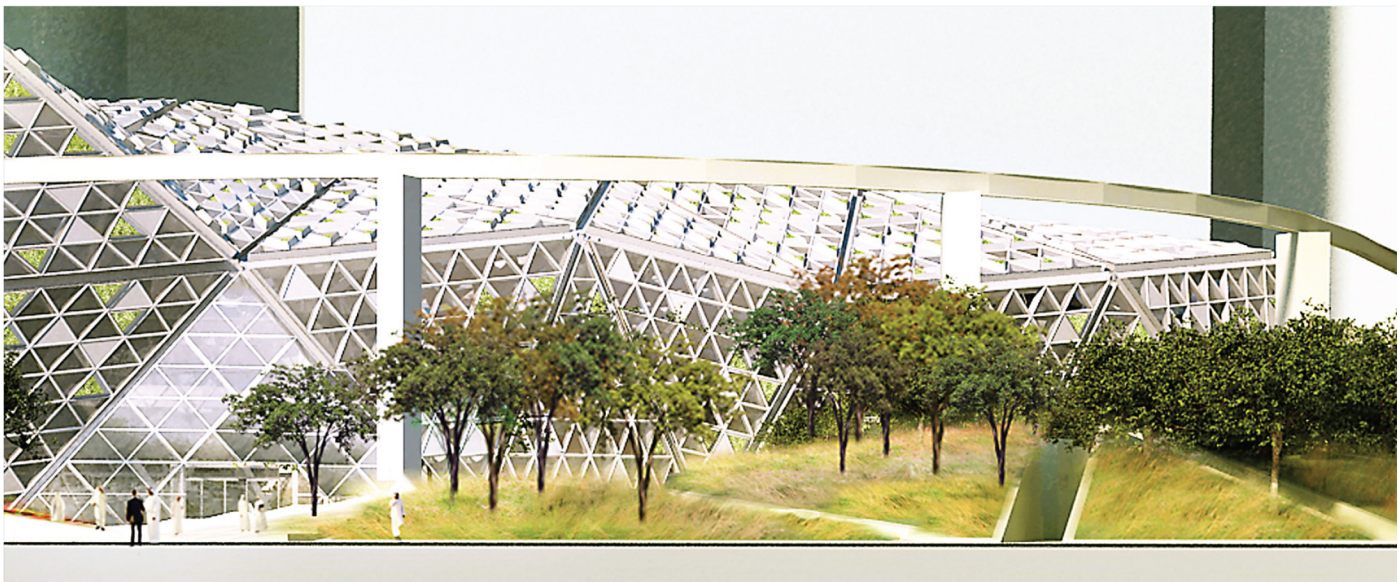


LANDSCAPE URBANISM

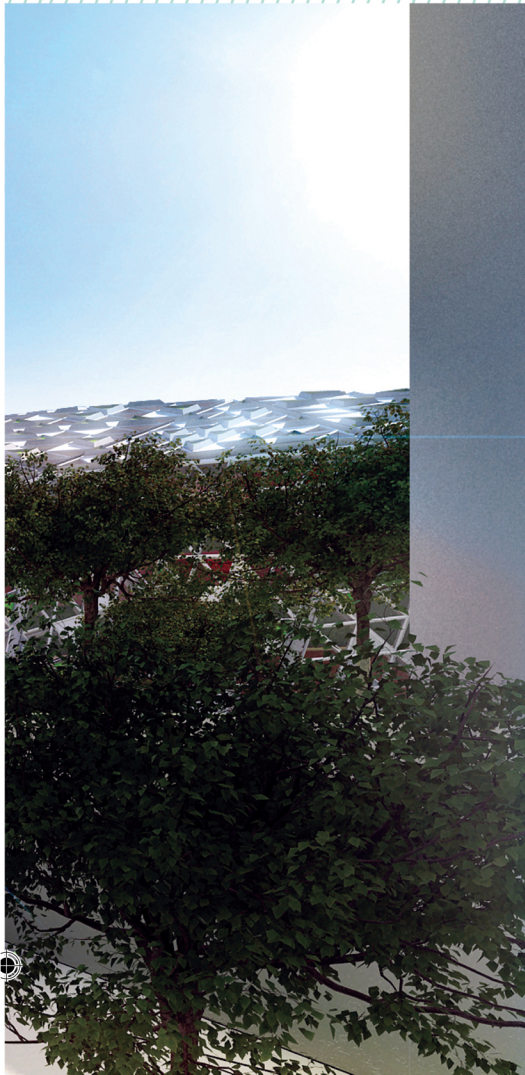


HM WHITE

**KING ABDULLAH FINANCIAL DISTRICT
CONFERENCE CENTER**
RIYADH, SAUDI ARABIA

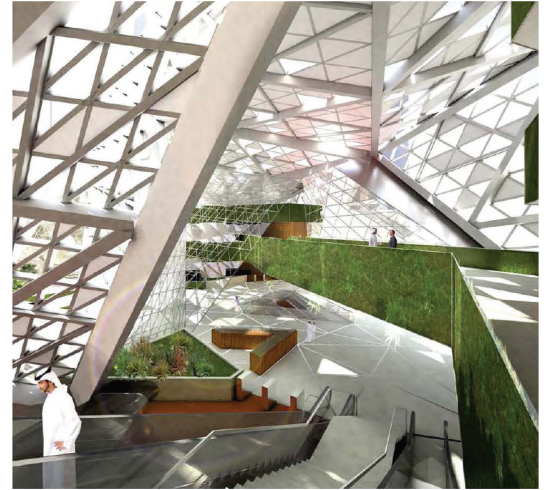


Wadi Approach

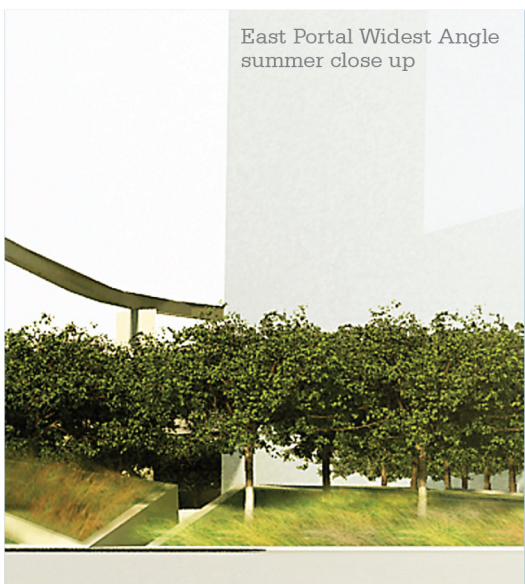


Re-introducing native grasses and flora into a large scale public space setting, indigenous plant communities spatially organize and blur the boundaries between the building's undulating "exoskeleton" skin and its surrounding landscape.

The future of Saudi Arabia's public landscape will indefinitely be influenced by this project's sustainable demonstration of viable "green" design strategies within a public domain and its renewed reconnection with the country's ecological heritage.



Out of the financial district's urban master plan, the KAFD Conference Center emerges as an iconic structure. Representative of the local "Wadi" landscape, HMWhite's design fuses landscape and structure.



East Portal Widest Angle summer close up



ECOSoil Compost

ECOSoil is a high quality organic fertilizer suitable for soil improvement, increases plant grow and reduced the water consumption. Customized mixtures of sand/compost can be provided. It comes in a 25kg bags, jumbo bags or in bulk.

- ✓ Enhances Growth of Plants
- ✓ Water Retaining
- ✓ Reduces the Percolation Rate
- ✓ Input of Organic Matter into Soil

Environment – friendly, Improves Soil Structure
Free of harmful seeds, weeds and pathogens

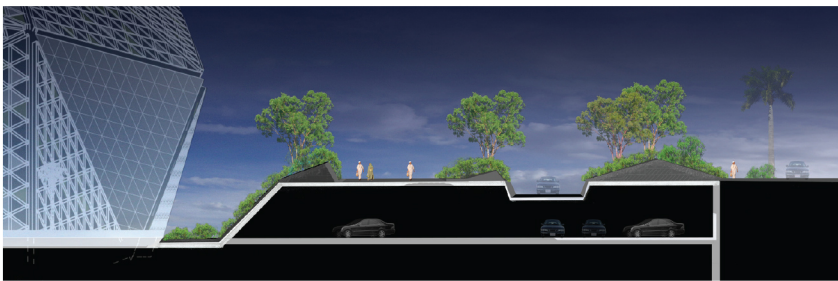


Emirates Environmental Technology LLC
T: +971 6 5569663, +971 3 7838033
F: +971 6 5569668, +971 3 7838102
M: +971 55 5465097, +971 56 1189515
Email: sales-alain@theiutgroup.com
Homepage: www.eet-uae.com



مركز إدارة النفايات أبوظبي
The Center of Waste Management - Abu Dhabi

LANDSCAPE URBANISM



Section A, B, and C

A custom hypertufa growing medium emulates the regional limestone cliff growing conditions. Flexibility to deploy cliff dwelling plants in a modular form across the center's varied planes and surfaces enables the vegetation and hypertufa to mimic the desert landscape.

The exterior strategy seamlessly flows into the building, where the vegetation becomes denser and creates a cooler, lush ambiance. Improving interior air quality, interior living walls weave in overlapping planted planes. Consisting of wild Agaves, Bromeliads, xeric ferns and perennials, the interior typology emulates a grotto oasis.

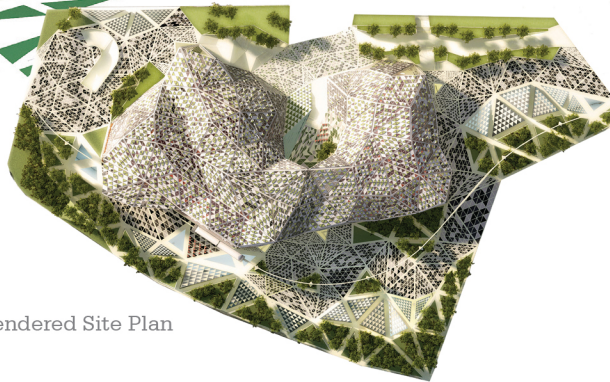
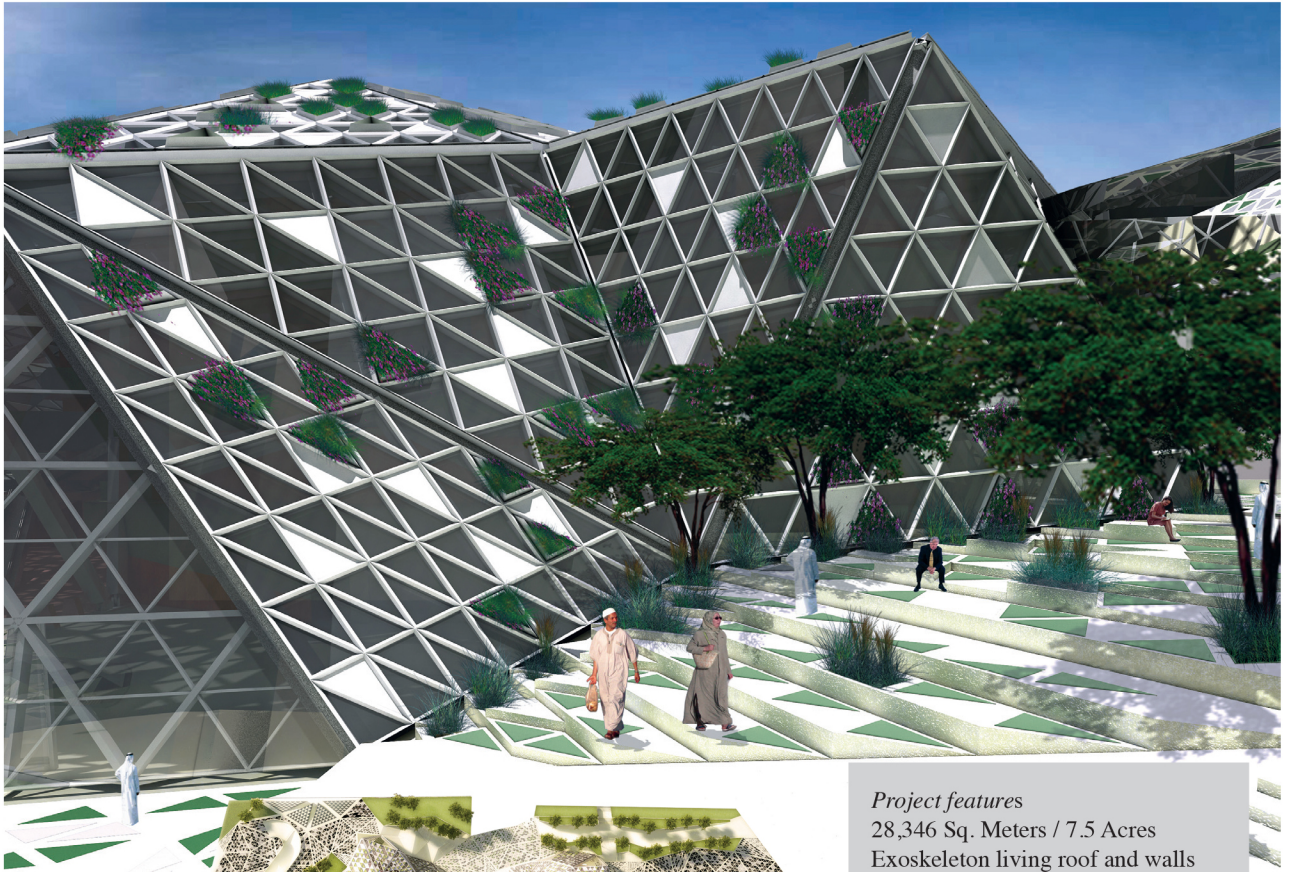
With an anticipated spring 2013 opening, the Conference Center's statuesque presence and iconic design has led to the decision to use it as the location for King Abdullah's KAFD development dedication speech.

HMWhite's design integrates innovative environmental best practices for the conference center's exterior and interior environments. By establishing this



Interior Plan

LANDSCAPE URBANISM



Rendered Site Plan

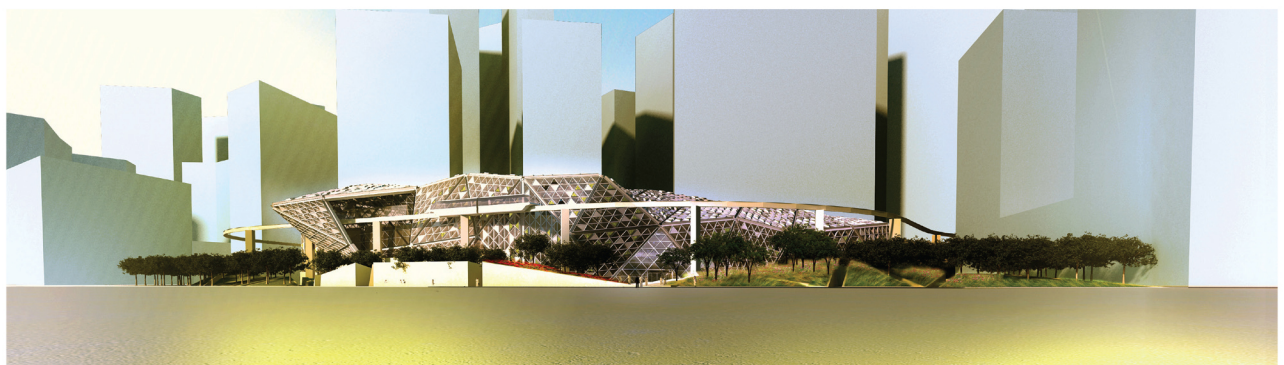
high performance biophilic infusion of the built and natural environment, the design compliments HMWhite's goal to integrate Biophilia throughout the entirety of the space. This design

approach also reveals regional cultural and historic attributes which further inform HMWhite's creation of highly revered, beautiful, and human scaled place-making environments.

Project features

- 28,346 Sq. Meters / 7.5 Acres
- Exoskeleton living roof and walls
- Storm water harvesting
- Interior living walls
- Public plaza landscape design
- Native desert meadow

Completion date: Spring 2013
Cost: \$280 Million
Client: Rayadah Investment Company
Design Team: Architect: Skidmore Owings Merrill (SOM)
Project Management: Hill International
Structural engineer: Som Structural
Mep: WSP - Flack and Kurtz
Water Features: Aqua Design



East Portal Widest Angle