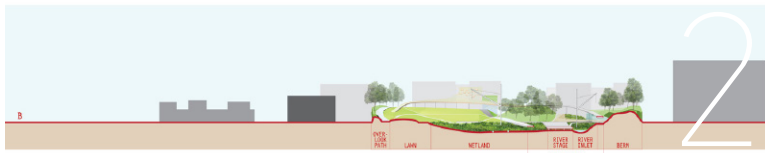
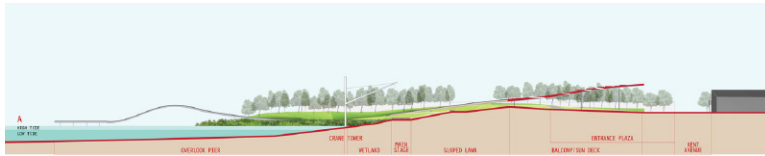
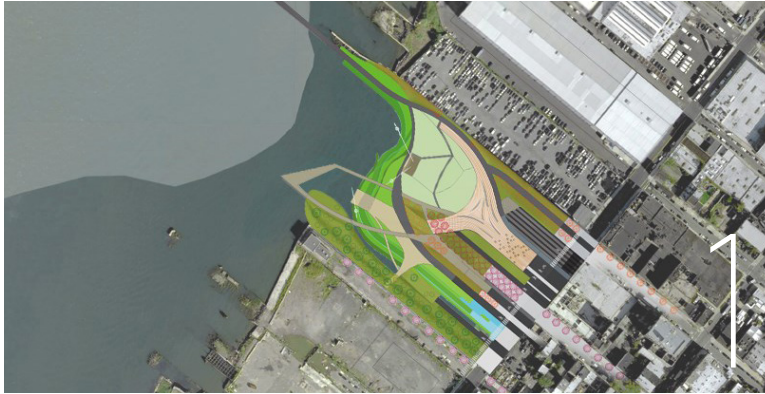
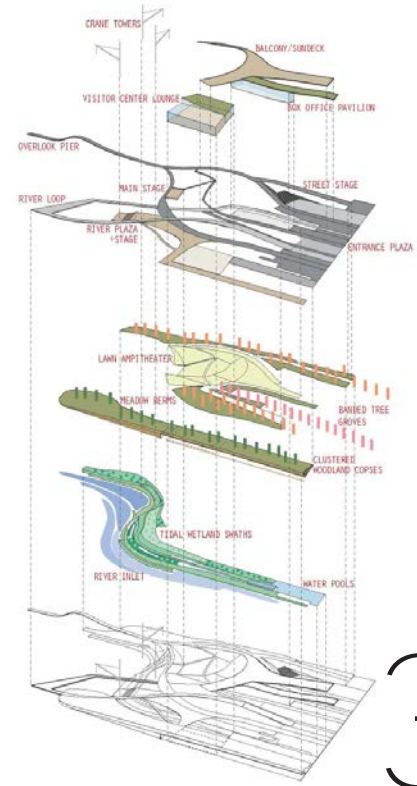




PERFORMANCE PARK



1. Park plan and aerial context; 2. Park sections; 3. A series of lawn planes are integrated within a network of pathways and open spaces and set within a sustainable river ecology.



PERFORMANCE PARK LANDSCAPE DESIGN AND PRESERVATION BROOKLYN, NEW YORK

HMWhite's master plan develops seven-acres of former industrial land on New York City's East River. Entitled "Performance Park," the riverfront park design incorporates a dynamic, multi-purpose public open space offering water-oriented recreation and cultural venues for theatrical expression and experiences.

Drawing from the site's industrial heritage, the design is inspired by rail interchange systems to extend the urban streetscape into the park and link it with the river. The concept sculpts the site's flat terrain by tilting an expansive open lawn defined by a path network, elevated platforms for gathering, skateboarding, community events, art installations and staging of the performing arts – all positioned to showcase the riverfront and cityscape landscape.

The design expands the river's edge into the park, forming a tidal inlet channel. Layered swathes of wetland meadow plantings regenerate the river's estuary function by restoring the wetland ecology and establishing a storm water capture and remediation zone. Within this new resilient riverfront edge a kayak / small craft launching pier allows active and passive recreation use and access for the expanded waterfront. Environmental education and awareness of the tidal inlet's role in the larger river ecology is brought into the public's focus.

INTERACTIVE INFRASTRUCTURE

Architectural pavilions house park amenity services and a network of walkways offers access to transportation services with views of the wetland and urban backdrop. A system of plazas and stages provide flexible spaces for public gatherings, recreation, and events.

MEADOW BERMS

Vegetated ridgelines permeate and frame the park to immerse visitors into the landscape. The swelling berms highlight riparian grass meadows crested by tree groves extending into the streetscape.

RIVER SWATH

Layered swathes of wetland meadow plantings along the river's edge restore its brackish wetland ecology and establish a storm water capture and remediation zone for the park.

CLIENT

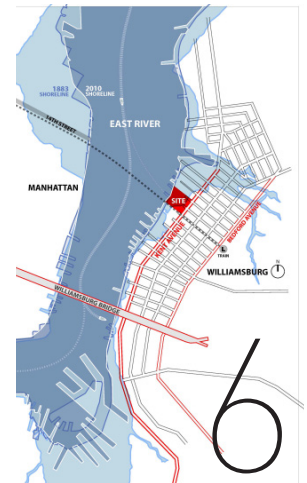
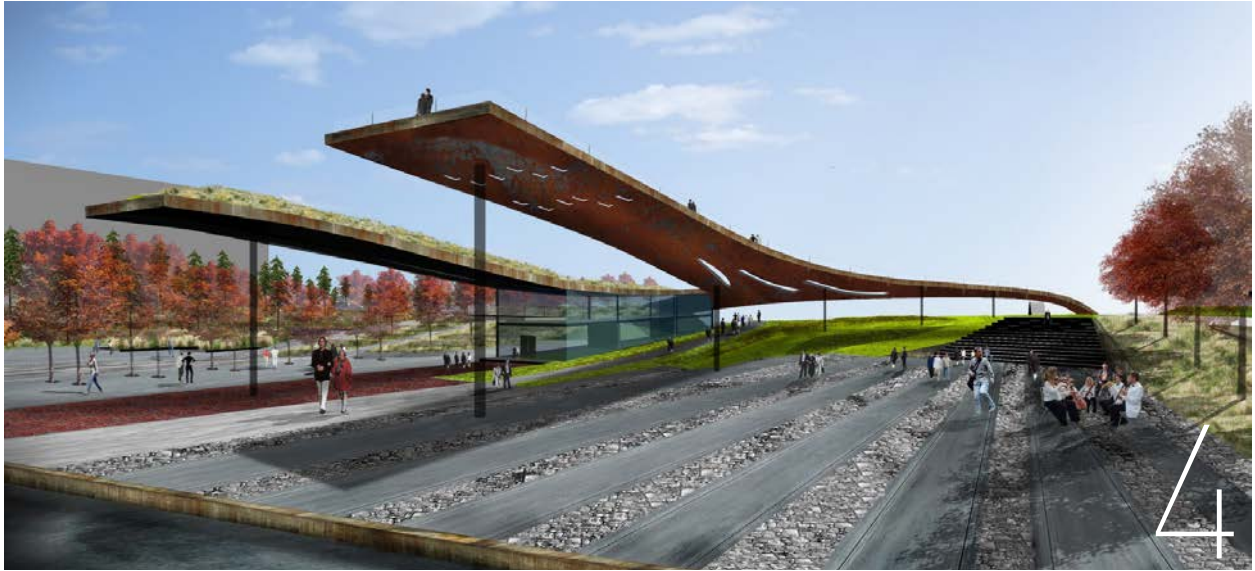
suckerPUNCH Architectural Association

PROJECT RELEVANCE

- 15 acres
- Minimize Site Disturbance
- Integrated Storm Water Management
- Native Drought Tolerant Plantings
- Club Garden Amenities
- Concept Renderings
- Generated for fundraising

COMPLETION

2010



4. A system of open spaces provide flexible spaces for public gatherings, recreation, and events; 5. Evening cultural performance rendering; 6. Historical site location plan diagram; 7. River estuary regeneration enhances the site's resiliency, provides an educational demonstration and reconnects city-dwellers to Mother Nature.